

Service Overview

Carefully read through this chapter for a look at various components of the Eee PC 4G (701) and necessary cautions and tools before performing any service and repairs.

To provide the best service and support for the ASUS Eee PC 4G (701), we have provided the below information for technicians from distributors and resellers to perform the complete disassembly and assembly. But before performing the procedures, please be sure to read through the overview in this chapter for component overview, cautions and tools to avoid any unwarranted damages to the hardware.

The following chapter includes:

- Eee PC 4G (701) Overview
- Components
- Precautions
- Appropriate Tools

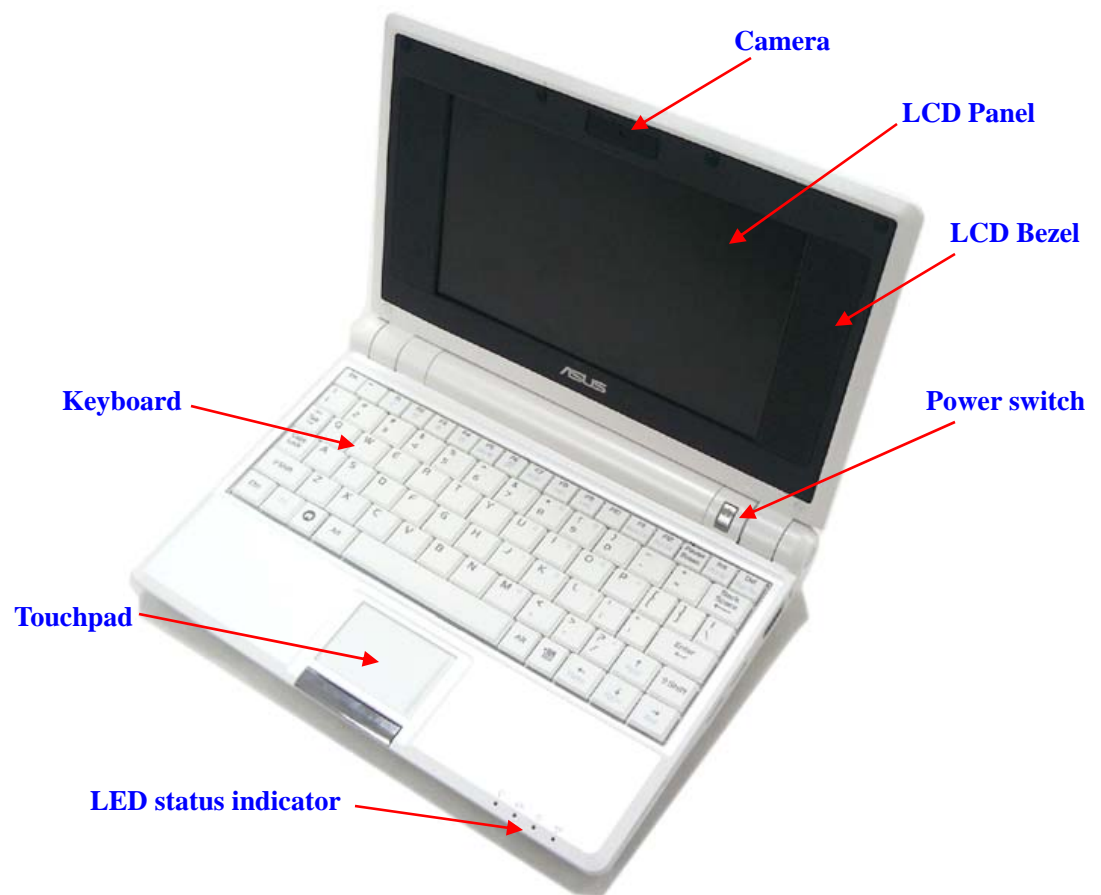
Eee PC 4G (701) Overview and Components

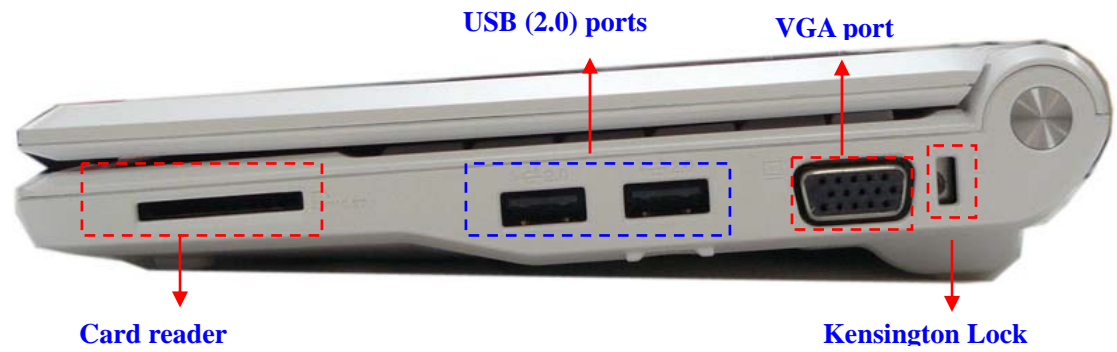
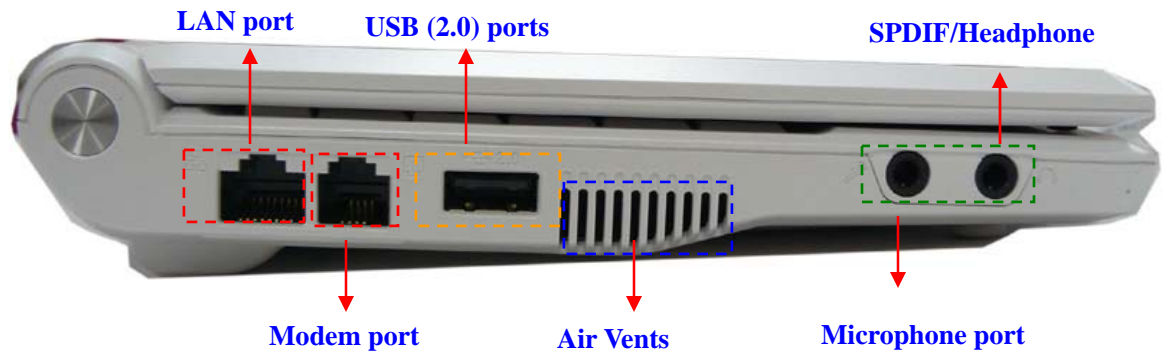
The ASUS Eee PC 4G (701) is a product combining the power of Intel® Mobile Processor. In this section, an overview for the Eee PC 4G (701), along with its components, will be presented.

OVERVIEW

Eee PC 4G (701) Overview

The illustrations below show the overview from front view, right side view, left side view, and rear side view. Most of the parts will be discussed in this manual.





Front view



COMPONENTS

Components

The illustrations below show the components of the Eee PC 4G (701).

LCD

LCD Panel

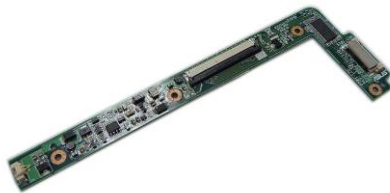
The illustration below shows the LCD display panel. The Eee PC 4G (701) comes with 7" TFT LCD Panel.



INVERTER
BOARD
MODULE

Inverter Board

The illustration below shows the inverter board, which is hidden underneath the lower edge of the LCD front bezel.



LCD HINGE

LCD Hinge

The illustration below shows the LCD Hinges.



LCD CASE

LCD Case

The illustration below shows the LCD case. Here is the LCD front cover, back cover.



KEYBOARD

Keyboard

The illustration below shows the keyboard plate. It can be exchanged with keyboard plates with different language layouts, such as U.S., France and others.



TOP CASE &

Top Case Module

The illustration below shows the top case of the Eee PC 4G (701).



TOUCHPAD

Touch Pad Module

The illustration below shows the Touch Pad module, top and bottom view.



BATTERY

Battery Pack

The illustration below shows the battery packs of the Eee PC 4G (701). It's located at bottom of the EEE PC 4G (701).



MEMORY

Memory Module

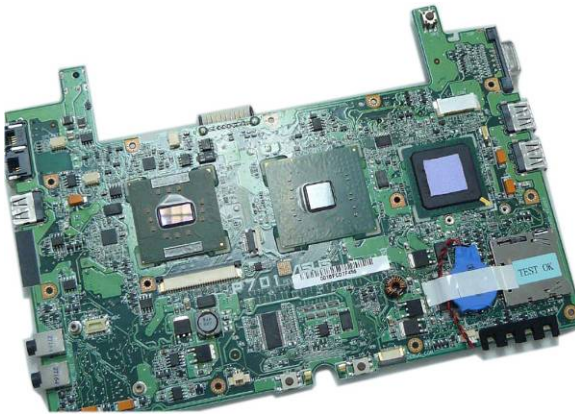
The illustration below shows the memory module for the Eee PC 4G (701).



MOTHER BOARD MODULE

Motherboard Module

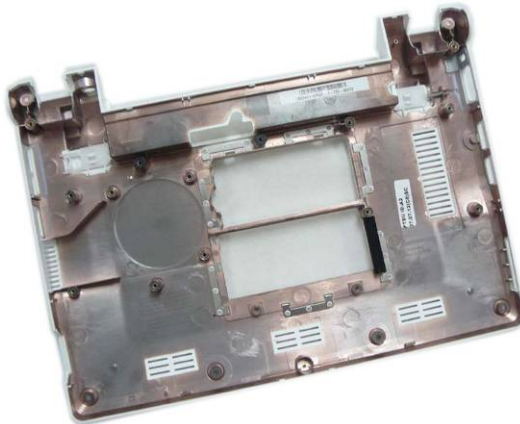
The illustration below shows the motherboard module of the Eee PC 4G (701).



BOTTOM CASE

Bottom Case Module

The illustration below shows the bottom case module of the Eee PC 4G (701), top and bottom view.



WIRELESS LAN MODULE

Wireless LAN Module

The illustration below shows the Wireless LAN Module of the Eee PC 4G (701). It contains Wireless LAN Card.



Service Overview

Please pay special attention to the cautions below to prevent any damages to the Eee PC 4G (701) and also please be sure to select the appropriate tools described in this section to perform any services desired.

CAUTIONS

Precautions

Before you perform any service and or repair on the Eee PC 4G (701), please follow the steps below first.

1. Be sure that the Eee PC 4G (701) is powered down.
2. Disconnect the AC plug from the Eee PC 4G (701)



3. Turn the Eee PC 4G (701) over. Unlock latch 1 towards the direction of arrow and then unlock and hold the latch 2 to remove the battery.



4. Remove all rings, watches and any other metal objects from your hands.



5. Always wear a ground strap on your hand to protect the Eee PC 4G (701) from static discharge.

TOOLS

Appropriate Tools

The illustrations below show the appropriate tools that should be used for the Eee PC 4G (701)'s service and repair.

CROSS SCREW- DRIVER

Phillips-head Screwdriver

Use a Phillips-head screwdriver to fasten/remove the K- or B-typed screws.



FLATHEAD SCREW- DRIVER

Single-Slotted Screwdriver

Use a single-slotted screwdriver to lock/unlock the flexible cable connector locks



TWEEZERS

Tweezers

Use a pair of tweezers to remove/insert flexible cables.



INSERTION AND EXTRACTION TOOL FOR FPC CONNECTOR

Insertion and extraction tool for FPC connector

Use insertion and extraction tool for FPC connector to handle locking and unlocking of FPC connectors.



VACUUM HANDLING TOOL

Vacuum Handling Tool



Disassembly Cautions

Before you perform any service and or repair on the Eee PC 4G (701), please read the notice below first.

ASUS hereby provides a basic instruction for the disassembly of ASUS products, i.e. to remove components and materials that require selective treatments, which are defined by Annex II of the European Union (EU) Waste Electrical and Electronic Equipment (WEEE) Directive 2002/96/EC. This instruction is intended for the use of end-of-life recyclers or treatment facilities. Following is the list of Annex II of EU WEEE Directive 2002/96/EC.

- polychlorinated biphenyls (PCB) containing capacitors in accordance with Council Directive 96/59/EC of 16 September 1996 on the disposal of polychlorinated biphenyls and polychlorinated terphenyls (PCB/PCT),
- mercury containing components, such as switches or backlighting lamps,
- batteries,
- printed circuit boards of mobile phones generally, and of other devices if the surface of the printed circuit board is greater than 10 square centimetres,
- toner cartridges, liquid and pasty, as well as colour toner,
- plastic containing brominated flame retardants,
- asbestos waste and components which contain asbestos,
- cathode ray tubes,
- chlorofluorocarbons (CFC), hydrochlorofluorocarbons (HCFC) or hydrofluorocarbons (HFC), hydrocarbons (HC),
- gas discharge lamps,
- liquid crystal displays (together with their casing where appropriate) of a surface greater than 100 square centimeters and all those back-lighted with gas discharge lamps,
- external electric cables,
- components containing refractory ceramic fibres as described in Commission Directive 97/69/EC of 5 December 1997 adapting to technical progress Council Directive 67/548/EEC relating to the classification, packaging and labelling of dangerous substances,
- components containing radioactive substances with the exception of components that are below the exemption thresholds set in Article 3 of and Annex I to Council Directive 96/29/Euratom of 13 May 1996 laying down basic safety standards for the protection of the health of workers and the general public against the dangers arising from ionising radiation,
- electrolyte capacitors containing substances of concern (height > 25 mm, diameter > 25 mm or proportionately similar volume)