

Chapter

2

Disassembly Procedure

Please follow the information provided in this section to perform the complete disassembly procedure of the Eee PC 4G (701). Be sure to use proper tools described before.

ASUS Eee PC 4G (701) consists of various modules. This chapter describes the procedures for the complete Eee PC 4G (701) disassembly. In addition, in between procedures, the detailed disassembly procedure of individual modules will be provided for your service needs.

The disassembly procedure consists of the following steps:

- Battery Module
- Memory Module
- Keyboard Module
- WLAN Module
- Top Case Module
- LCD Module
- Motherboard Module

BATTERY

Battery Module

The illustration below shows how to remove the battery module.

Remove battery module

1. Slide the battery lock to open it
2. Slide the battery latch and hold the battery to remove it from system.



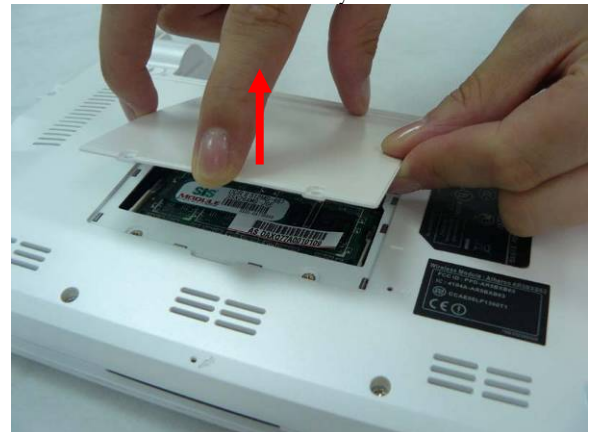
MEMORY
MODULE

Memory Module

The illustration shows how to remove the memory module from the Eee PC 4G (701).

Removing Memory module

1. Remove 2 screws (M2*4) on the memory cover then remove it from the system.



MEMORY
REMOVAL

2. Softly open the two latches to pop the memory module up at 45 degree angles and then remove the memory at that angle.



Keyboard Module

The illustration of below shows how to remove the keyboard

Removing Keyboard

1. Turn over the NB and push the 3 latches (F1; F6; Pause) on keyboard module to lift the keyboard plate.

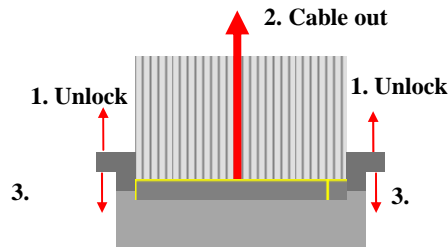


2. Place the keyboard plate on the top case and disconnect the keyboard FPC to remove.



Removing Keyboard Cable

1. Use a flexible connector tool to unlock the cable connector on both ends (no. 1).
2. Carefully pull out the keyboard cable (no. 2) with a pair of tweezers.
3. Lock the connector (no. 3) again to avoid possible breakage.



TOP CASE MODULE

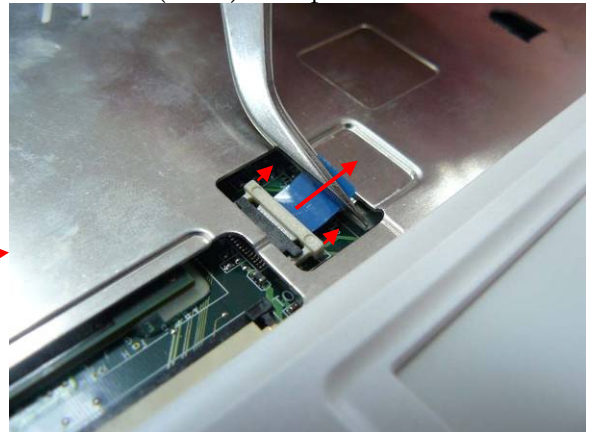
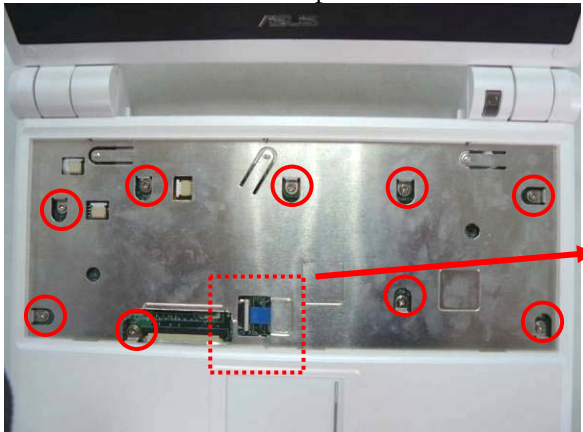
Top Case Module

The illustrations below show how to disassemble and remove the top case module of the Eee PC 4G (701). The module contains the top case itself.

TOP CASE REMOVAL

Removing Top Case Module

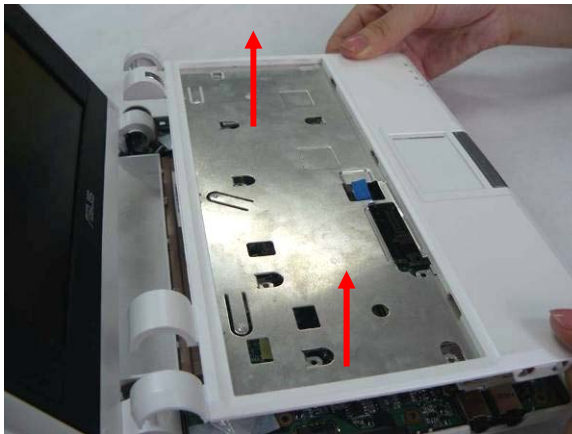
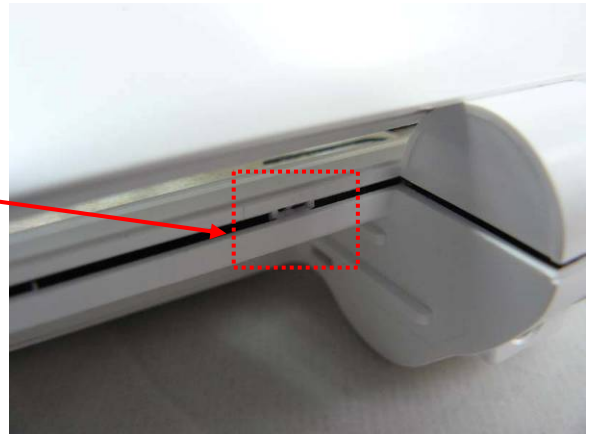
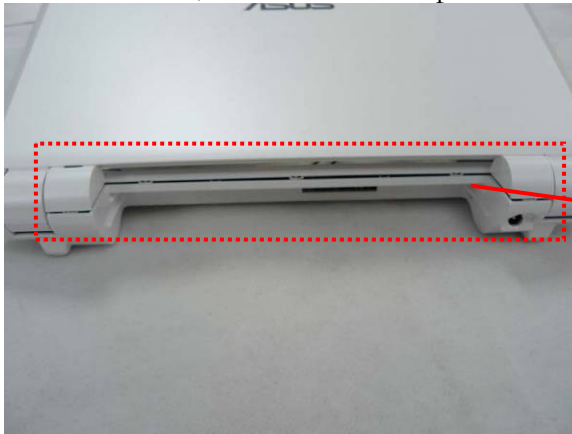
1. Disconnect the touch pad FPC and then remove 9 screws (M2*4) on top case.



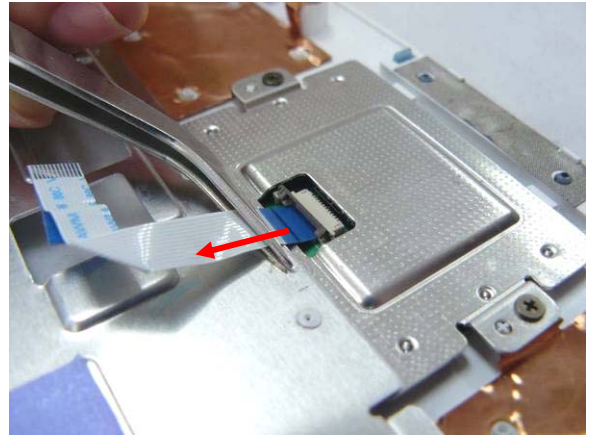
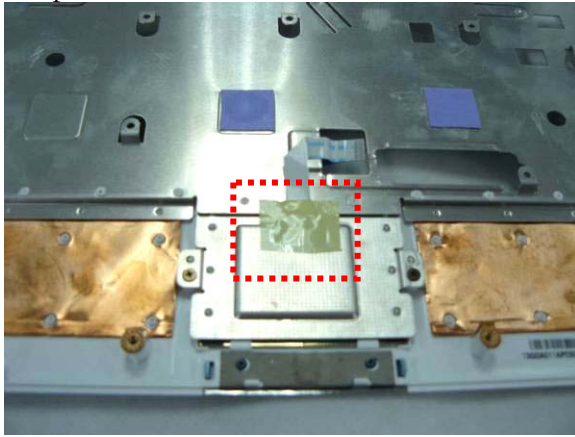
2. Close and turn the system upside down to remove 6 screws (M2*4) on the bottom case.



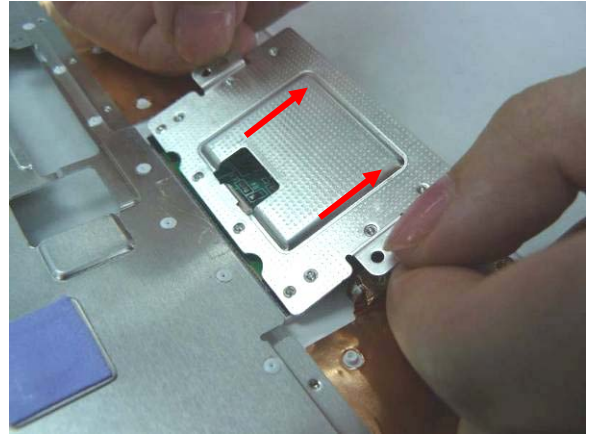
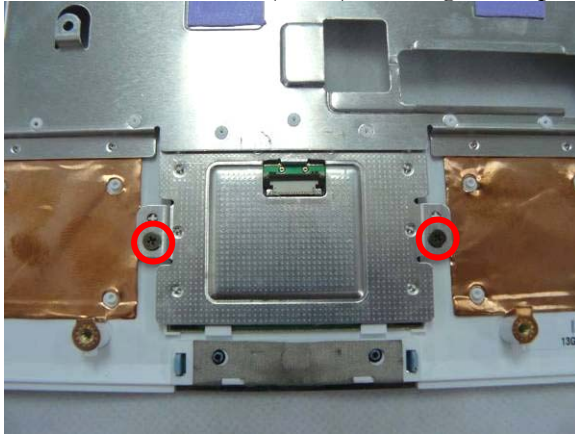
3. Softly pry the four sides of the system to open the latch hooks securing the top case with bottom case, then remove the top case.



4. Remove 1 piece of tape on the touch pad FPC then open the latch to disconnect it from touch pad board.



5. Remove 2 screws (M2*3) securing touch pad bracket and then remove the bracket.



6. Remove the touch pad board from the top case.



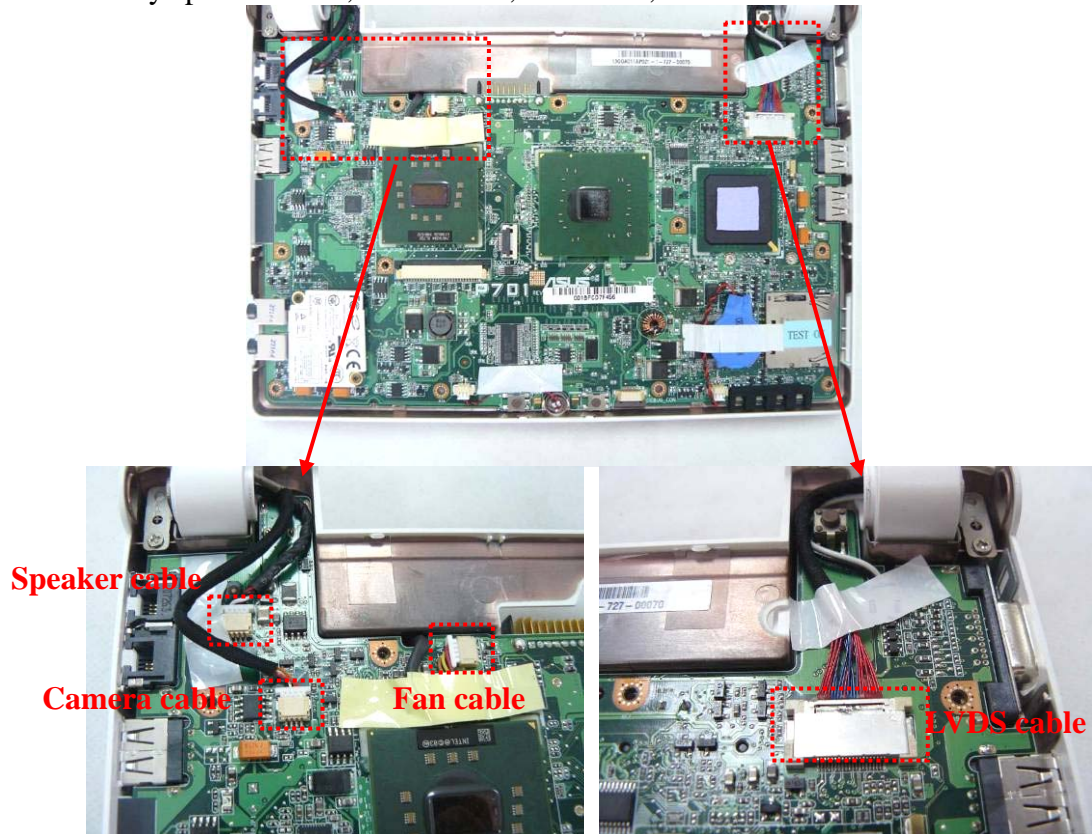
WLAN
MODULE

WLAN Module

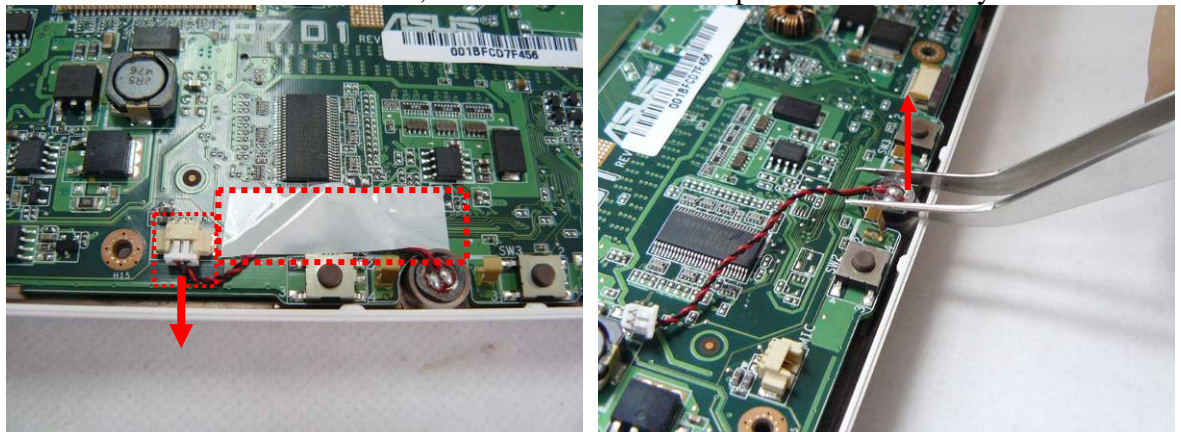
The illustrations below show how to remove the WLAN module from the Eee PC 4G (701).

Remove WLAN module

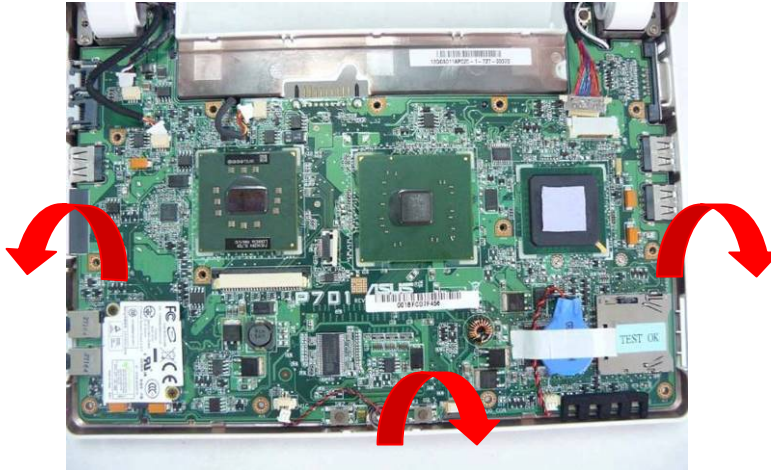
1. Remove 3 pieces of tape fixing the cable and then disconnect the following 4 cables, namely speaker cable, CMR cable, Fan cable, LVDS cable.



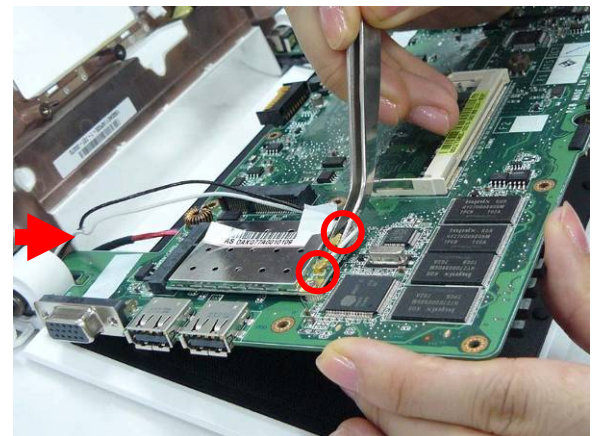
2. Remove 1 piece of tape fixing the microphone cable and disconnect the microphone cable from the mother board, and then take the microphone module away.



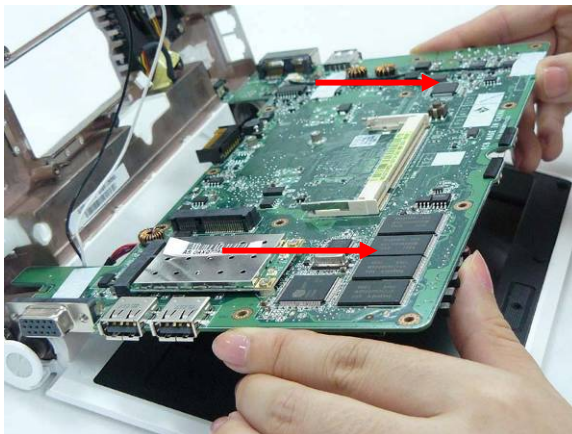
3. Lift the mother board from bottom case by softly separating from the bottom side, two sides to the top. * pay attention not to remove the mother board for now, for that the WLAN antenna is still connected with the mother board.



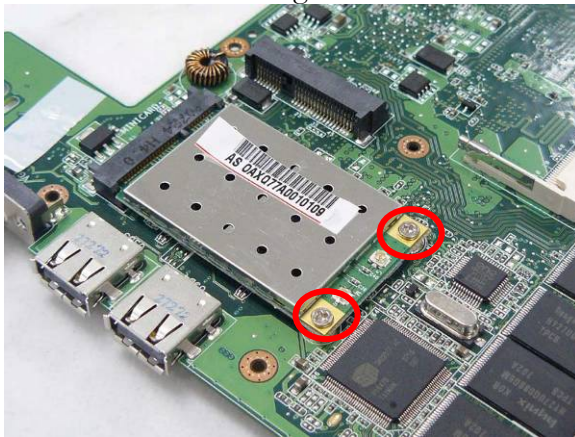
4. Turn the LCD with its back cover on the platform and hold the mother board while disconnecting the two antennas.



5. Remove the mother board from the bottom case.



6. Remove 2 screws (M2*4) on the WLAN module to pop up the module at 30 degree angles and then remove it at that angle.



MOTHER BOARD

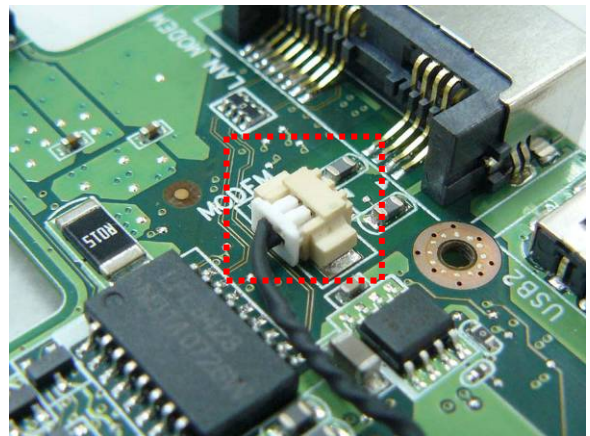
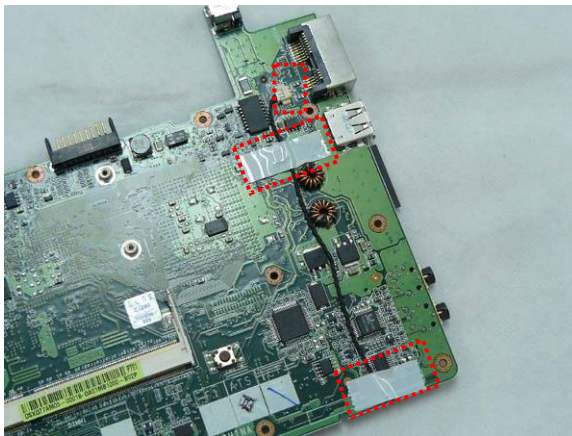
Motherboard

The illustrations below show how to disassemble and remove the Motherboard.

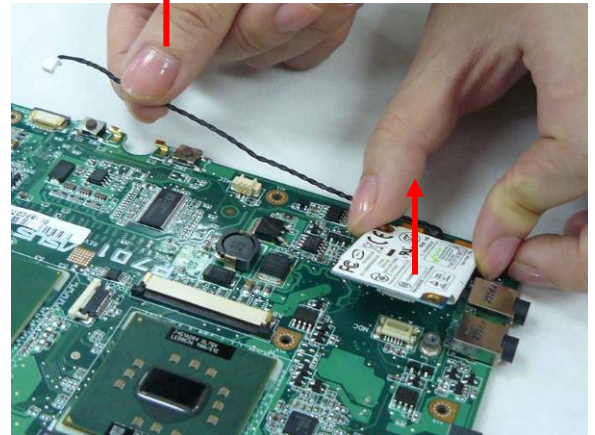
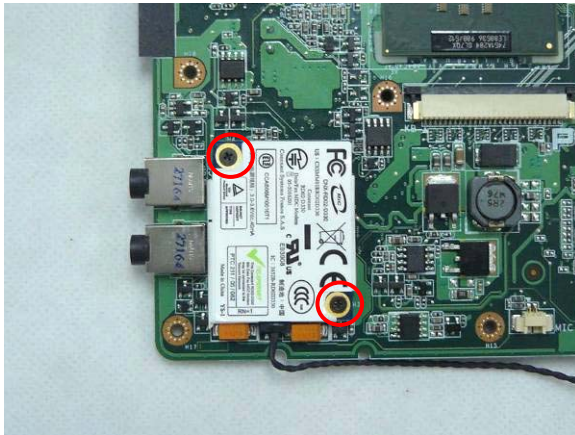
MOTHERBOARD REMOVAL

Removing Motherboard

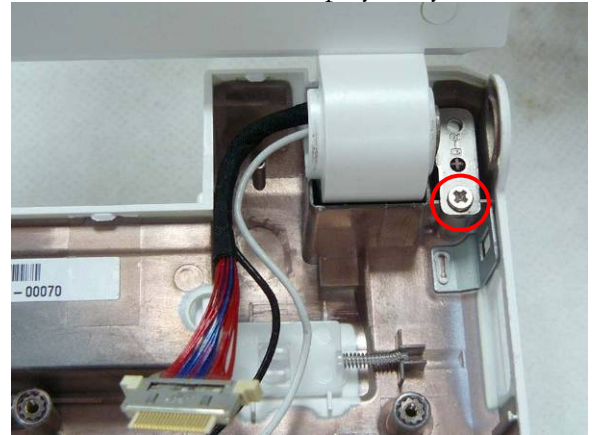
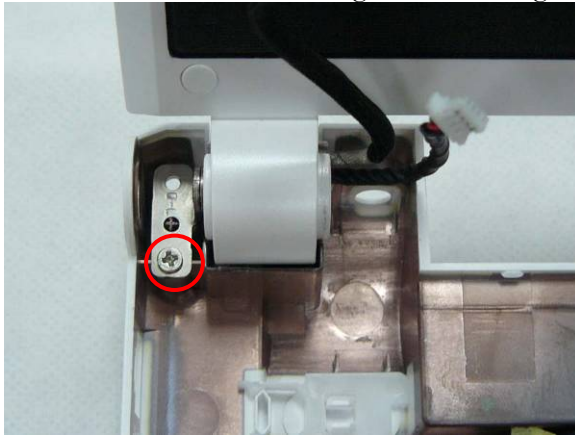
1. Tear off 2 pieces of tape fixing the Modem cable and disconnect the Modem cable from mother board.



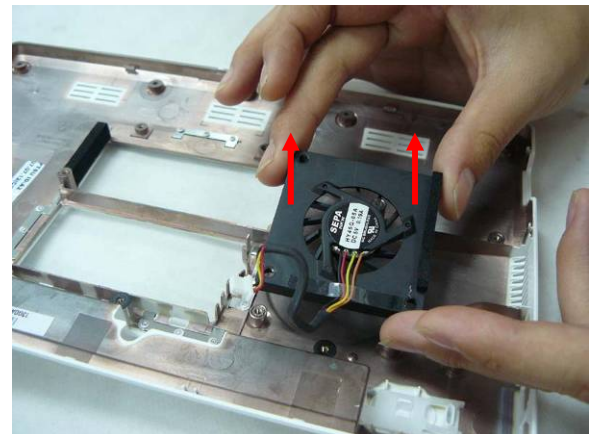
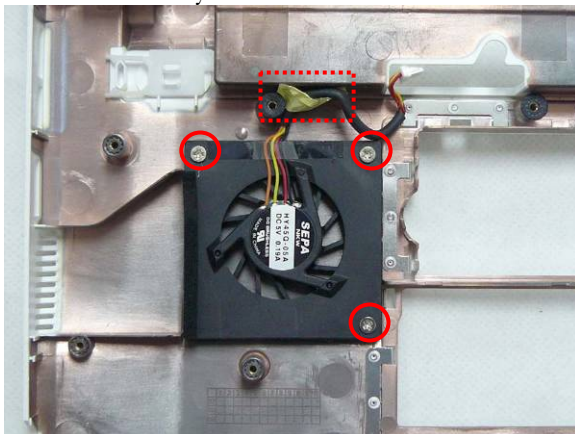
2. Remove two screws (M2*3) securing the Modem module and then remove it from the mother board.



3. Remove 2 screws screwing the LCD hinges and then take the LCD display away.



4. Remove 1 piece of tape and 3 screws (M*4) securing the Fan module and then take the Fan module away.



LCD MODULE

LCD Module

The illustrations below show how to remove and disassemble the LCD module. The module contains LCD panel, Inverter board, LCD bezel, LCD back cover.

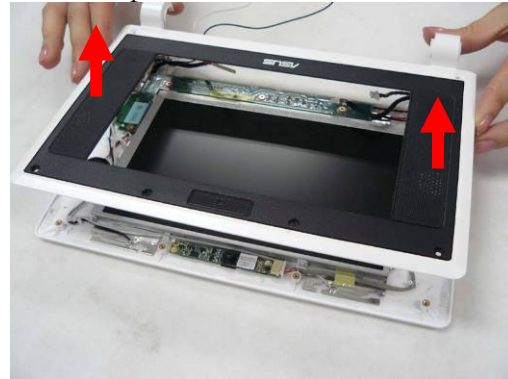
LCD MODULE
DISASSEMBLY

Disassembling LCD Module

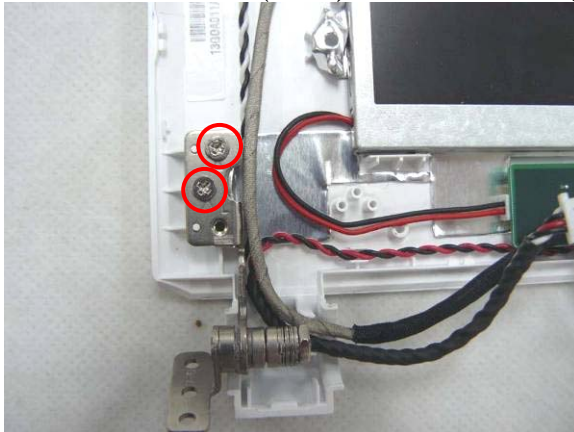
1. Remove 8 rubber pads and screws (M2*4) on LCD front bezel.

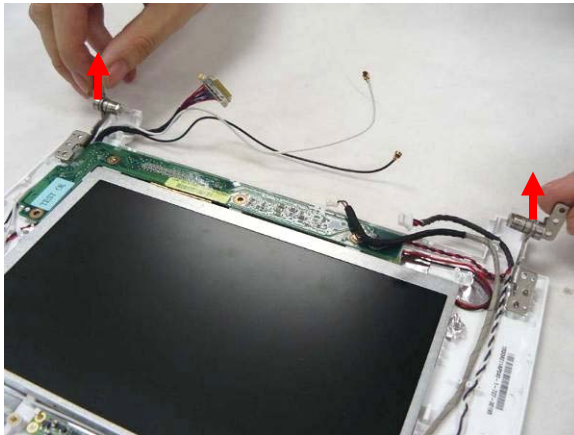


2. Pry the four inner sides of LCD front bezel and separate it from LCD module.

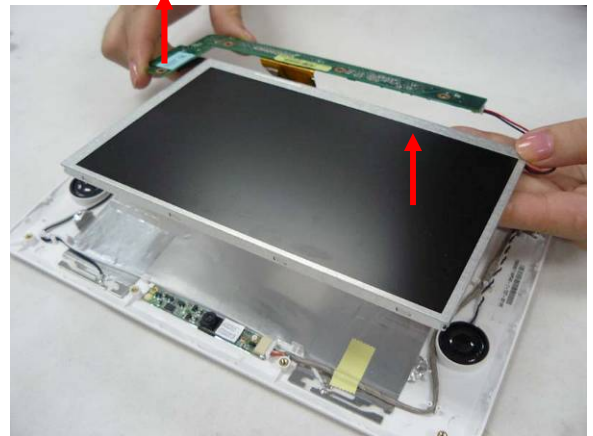
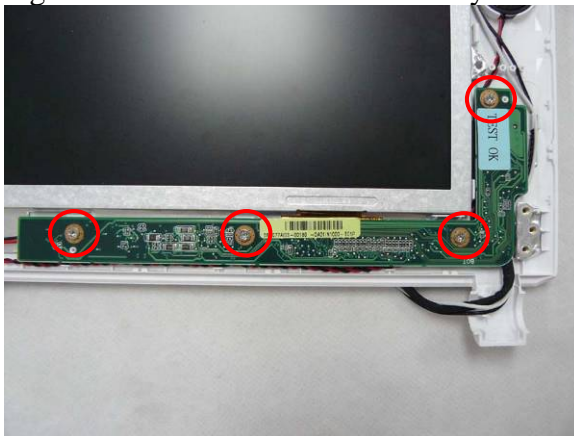


3. Remove 2 screws (M2*4) on each LCD hinge and remove both hinges.

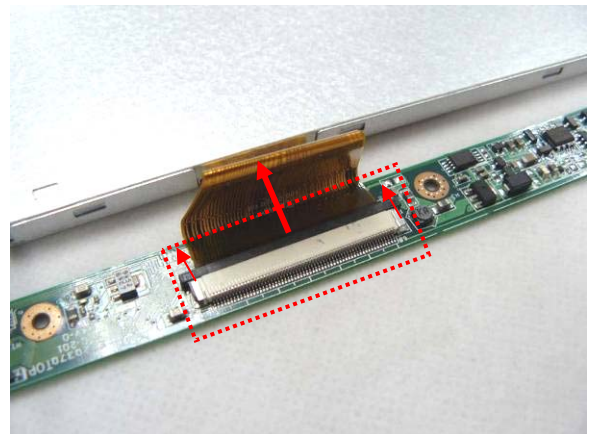
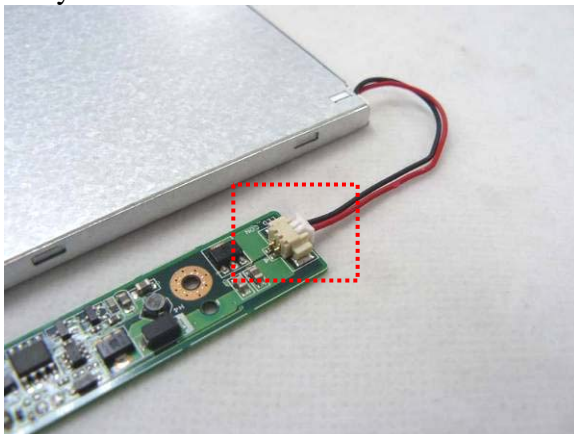




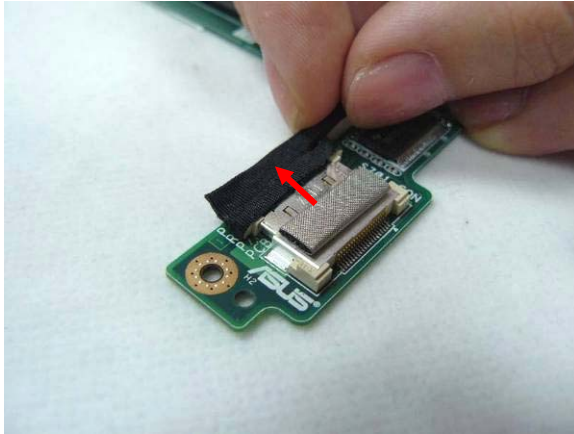
4. Unscrew 4 (M2*4) screws securing the inverter board and then take the LCD panel together with the inverter board away from LCD back cover .



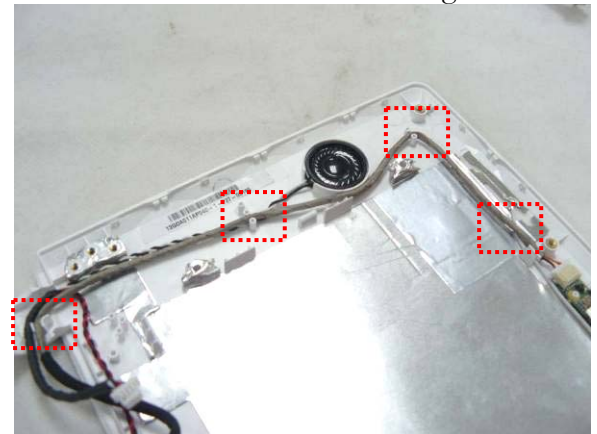
5. Disconnect the inverter cable, LCD FPC cable from inverter board and take the board away.



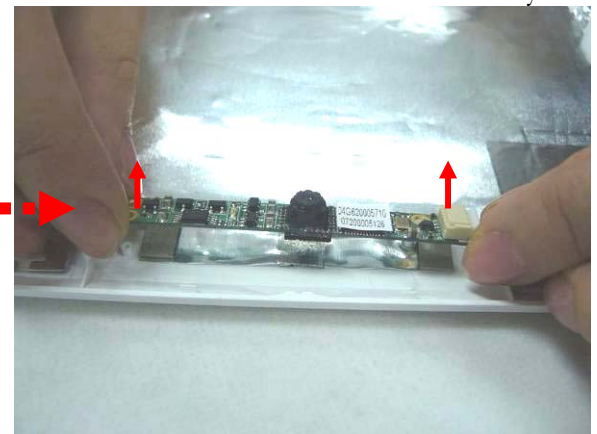
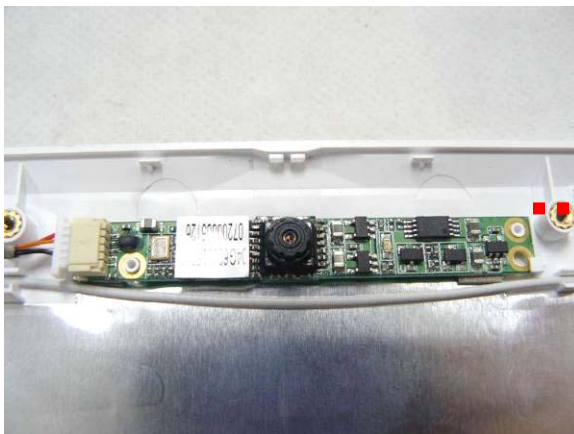
6. Disconnect the coaxial cable from inverter board.



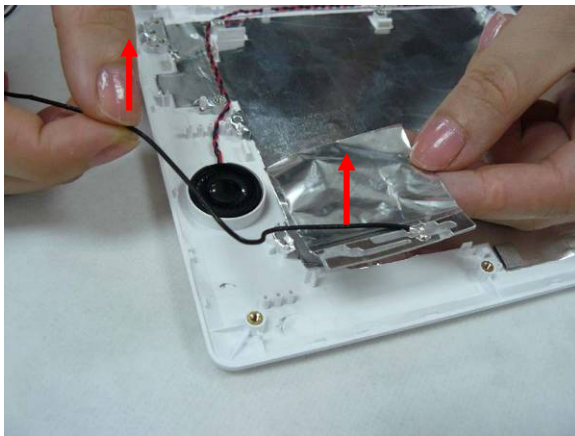
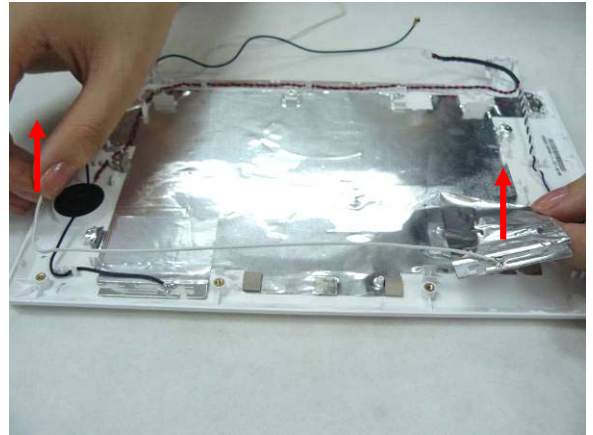
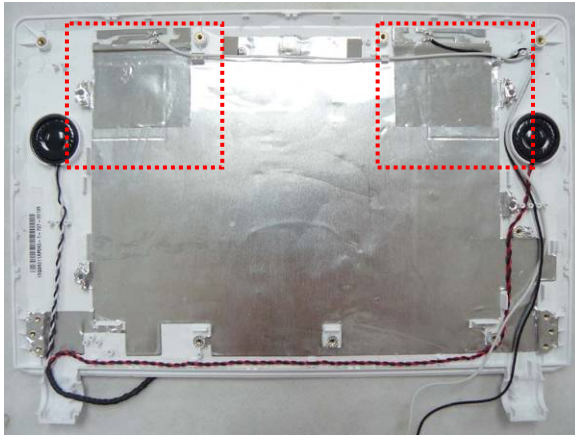
7. Tear off 1 piece of tape fixing camera cable and take the camera cable off cable guide.



8. Remove the camera board from LCD back cover and then take the whole module away.



9. Take the WLAN antennas off cable guides and remove the antennas together with its tape from LCD back cover.



10. Take the speaker cables off cable guides and remove both speakers from their slots.

